



GeneQuery™ Human Hemostasis qPCR Array Kit (GQH-HEM) Catalog #GK056

Product Description

ScienCell's GeneQuery™ Human Hemostasis qPCR Array Kit (GQH-HEM) profiles 88 key genes involved in stopping bleeding. Upon wounding, hemostasis generally involves vasoconstriction to prevent blood flow to the afflicted area, forming a temporary plug to inhibit bleeding, and then coagulation or blood clotting. Examples of disorders in hemostasis are hemophilia, thrombosis, and embolisms. Brief examples of how included genes may be grouped according to their function in hemostasis are shown below:

- **Platelet activation:** F2R, FCER1G, FYN, PLA2G4A, PIK3CB
- **Clotting:** F8, PF4, PLAT, THBD, COL4A1
- **Coagulation:** A2M, F7, PLAUR, C5AR1, C7
- **Hemophilia:** F2, F3, VWF, IL10, F5

GeneQuery™ qPCR array kits are qPCR ready in a 96-well plate format, with each well containing one primer set that recognizes and efficiently amplifies a specific target gene's cDNA. The carefully designed primers ensure that: (i) the optimal annealing temperature in qPCR analysis is 65°C (with 2 mM Mg²⁺ and no DMSO); (ii) the primer set recognizes all known transcript variants of the target gene, unless otherwise noted; and (iii) only one gene is amplified. Each primer set has been validated by qPCR with melt curve analysis and gel electrophoresis.

GeneQuery™ qPCR Array Kit Controls

Each GeneQuery™ plate contains eight controls (Figure 1):

- Five target housekeeping genes (β -actin, GAPDH, LDHA, NONO, and PPIH), which enable normalization of data.
- The Genomic DNA (gDNA) Control (GDC), which detects gDNA contamination in cDNA samples. This primer set targets a non-transcribed region of the genome.
- Positive PCR Control (PPC), which tests whether samples contain inhibitors or other factors that may negatively affect gene expression results. The PPC consists of a predispensed synthetic DNA template and a primer set that can amplify it. The sequence of the DNA template is not present in the human genome and thus tests the efficiency of the polymerase chain reaction itself.
- The No Template Control (NTC), which can be used to monitor DNA contamination introduced during workflow (e.g. from such sources as reagents, tips, and the lab bench).

Kit Components

Component	Quantity	Storage
GeneQuery™ array plate with lyophilized primers	1	4°C or -20°C
Optical PCR plate seal	1	RT
Nuclease-free H ₂ O	2 mL	4°C

Additional Materials Required (Materials Not Included in Kit)

Component	Recommended
Reverse transcriptase	MultiScribe Reverse Transcriptase (Life Tech, Cat. #4311235)
cDNA template	Customers' samples
qPCR master mix	FastStart Essential DNA Green Master (Roche, Cat. #06402712001)

Quality Control

All primer sets are validated by qPCR with melt curve analysis and analyzed by gel electrophoresis. Single band amplification is confirmed for each set of primers.

Product Use

GQH-ANG is for research use only. It is not approved for human or animal use or for application in clinical or *in vitro* diagnostic procedures.

Shipping and Storage

This product is shipped at ambient temperature. Upon receipt, the plate should be stored at 4°C and is good for up to 12 months. For long-term storage (>1 year), store at -20°C in a manual defrost freezer.

Procedures

Note: The primers in each well are lyophilized.

1. Prior to use, allow plates to warm to room temperature.
2. Briefly centrifuge at 1,500x g for 1 minute before slowly peeling off the seal.
3. Prepare 20 μ l PCR reactions for one well as shown in Table 1.

Table 1

cDNA template	0.2 – 250 ng
2x qPCR master mix	10 μ l
Nuclease-free H ₂ O	variable
<i>Total volume</i>	<i>20 μl</i>

Important: *Only use polymerases with hot-start capability to prevent possible primer-dimer formation. Only use nuclease-free reagents in PCR amplification.*

4. Add the mixture of 2x qPCR master mix, cDNA template, and nuclease-free H₂O to each well containing the lyophilized primers. Seal the plate with the provided optical PCR plate seal.

Important: *In NTC control well, do NOT add cDNA template. Add 2x qPCR master mix and nuclease-free H₂O only.*

5. Briefly centrifuge the plates at 1,500x g for 1 minute at room temperature. For maximum reliability, replicates are strongly recommended (minimum of 3).
6. For PCR program setup, please refer to the instructions of the master mix of the user's choice. We recommend a typical 3-step qPCR protocol for a 200nt amplicon:

Three-step cycling protocol

Step	Temperature	Time	Number of cycles
Initial denaturation	95°C	10 min	1
Denaturation	95°C	20 sec	40
Annealing	65°C	20 sec	
Extension	72°C	20 sec	
Data acquisition	Plate read		
<i>Recommended</i>	<i>Melting curve analysis</i>		1
Hold	4°C	Indefinite	1

7. (Optional) Load the PCR products on 1.5% agarose gel and perform electrophoresis to confirm the single band amplification in each well.

Figure 1. Layout of GeneQuery™ qPCR array kit controls.

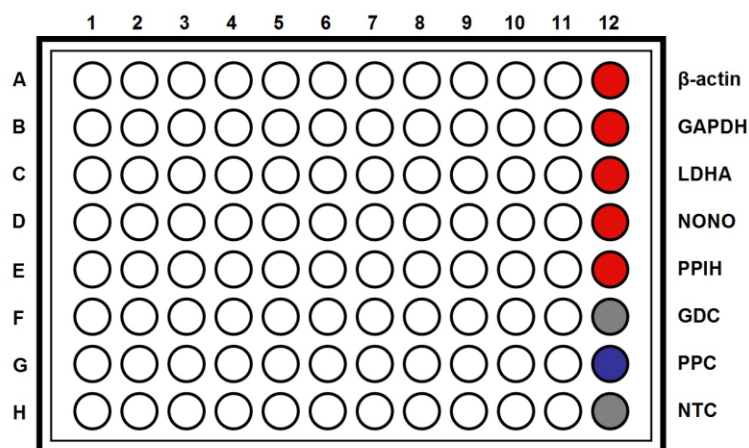


Table 2. Interpretation of control results:

<i>Controls</i>	<i>Results</i>	<i>Interpretation</i>	<i>Suggestions</i>
Housekeeping gene controls	Variability of a housekeeping gene's C _q value	The expression of the housekeeping gene is variable in samples; cycling program is incorrect	Choose a constantly expressed target, or analyze expression levels of multiple housekeeping genes; use correct cycling program and make sure that all cycle parameters have been correctly entered
gDNA Control (GDC)	C _q ≥ 35	No gDNA detected	N/A
	C _q < 35	The sample is contaminated with gDNA	Perform DNase digestion during RNA purification step
Positive PCR Control (PPC)	C _q > 30; or The C _q variations > 2 between qPCR Arrays.	Poor PCR performance; possible PCR inhibitor in reactions; cycling program incorrect	Eliminate inhibitor by purifying samples; use correct cycling program and make sure that all cycle parameters have been correctly entered
No Template Control (NTC)	Positive	DNA contamination in workflow	Eliminate sources of DNA contamination (reagents, plastics, etc.)

Figure 2. A typical amplification curve showing the amplification of a qPCR product.

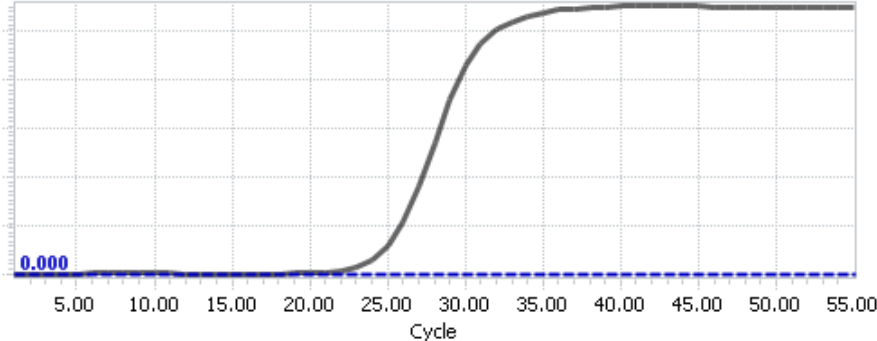
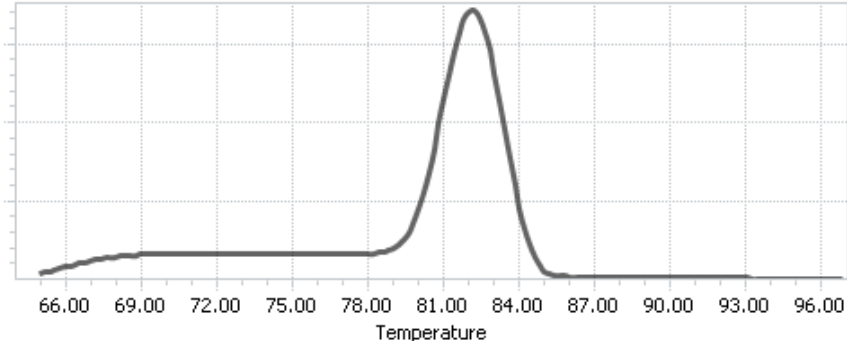


Figure 3. A typical melting peak of a qPCR product.



Quantification Method: Comparative $\Delta\Delta Cq$ (Quantification Cycle Value) Method

1. **Note:** Please refer to your qPCR instrument's data analysis software for data analysis. The method provided here serves as guidance for quick manual calculations.

You can use one or more housekeeping genes as a reference to normalize samples.

Important: We highly recommend using all 5 housekeeping genes included in this kit, β -actin, GAPDH, LDHA, NONO, and PPIH.

2. For a single housekeeping gene, ΔCq (ref) is the quantification cycle number change for that housekeeping gene (HKG) between an experimental sample and control sample.

$$\Delta Cq \text{ (ref)} = Cq \text{ (HKG, experimental sample)} - Cq \text{ (HKG, control sample)}$$

When using multiple housekeeping genes as a reference, we recommend normalizing using the geometric mean [1] of the expression level change, which is the same as normalizing using the arithmetic mean of ΔCq of the selected housekeeping genes.

$\Delta Cq \text{ (ref)} = \text{average} (\Delta Cq \text{ (HKG1)}, \Delta Cq \text{ (HKG2)}, \dots, \Delta Cq \text{ (HKG n)})$ (n is the number of housekeeping genes selected)

If using all 5 housekeeping genes included in this kit, β -actin, GAPDH, LDHA, NONO, and PPIH, use the following formula:

$$\Delta Cq \text{ (ref)} = (\Delta Cq(\beta\text{-actin}) + \Delta Cq(\text{GAPDH}) + \Delta Cq(\text{LDHA}) + \Delta Cq(\text{NONO}) + \Delta Cq(\text{PPIH})) / 5$$

Note: $\Delta Cq \text{ (HKG)} = Cq \text{ (HKG, experimental sample)} - Cq \text{ (HKG, control sample)}$, and $\Delta Cq \text{ (HKG)}$ value can be positive, 0, or negative.

3. For any of your genes of interest (GOI),

$$\Delta Cq \text{ (GOI)} = Cq \text{ (GOI, experimental sample)} - Cq \text{ (GOI, control sample)}$$

$$\Delta\Delta Cq = \Delta Cq \text{ (GOI)} - \Delta Cq \text{ (ref)}$$

$$\text{Normalized GOI expression level fold change} = 2^{-\Delta\Delta Cq}$$

References

[1] Vandesompele J, De Preter K, Pattyn F, Poppe B, Van Roy N, De Paepe A, Speleman F. (2002) "Accurate normalization of real-time quantitative RT-PCR data by geometric averaging of multiple internal control genes." *Genome Biol.* 3(7): 1-12.

Example: Comparative $\Delta\Delta Cq$ (Quantification Cycle Value) Method

Table 3. Cq (Quantification Cycle) values of 2 genes-of-interest and 5 housekeeping genes obtained for experimental and control samples.

Samples	Genes of Interest		Housekeeping Genes				
	GOI1	GOI2	<i>β-actin</i>	<i>GAPDH</i>	<i>LDHA</i>	<i>NONO</i>	<i>PPIH</i>
Experimental	21.61	22.19	17.16	17.84	20.12	19.64	26.40
Control	33.13	26.47	18.20	18.48	20.57	19.50	26.55

$$\begin{aligned}\Delta Cq(\text{ref}) &= (\Delta Cq(\beta\text{-actin}) + \Delta Cq(\text{GAPDH}) + \Delta Cq(\text{LDHA}) + \Delta Cq(\text{NONO}) + \Delta Cq(\text{PPIH})) / 5 \\ &= ((17.16 - 18.20) + (17.84 - 18.48) + (20.12 - 20.57) + (19.64 - 19.50) + (26.40 - 26.55)) / 5 \\ &= -0.43\end{aligned}$$

$$\begin{aligned}\Delta Cq(\text{GOI1}) &= 21.61 - 33.13 \\ &= -11.52\end{aligned}$$

$$\begin{aligned}\Delta Cq(\text{GOI2}) &= 22.19 - 26.47 \\ &= -4.28\end{aligned}$$

$$\begin{aligned}\Delta\Delta Cq(\text{GOI1}) &= \Delta Cq(\text{GOI1}) - \Delta Cq(\text{ref}) \\ &= -11.52 - (-0.43) \\ &= -11.09\end{aligned}$$

$$\begin{aligned}\Delta\Delta Cq(\text{GOI2}) &= \Delta Cq(\text{GOI2}) - \Delta Cq(\text{ref}) \\ &= -4.28 - (-0.43) \\ &= -3.85\end{aligned}$$

$$\begin{aligned}\text{Normalized GOI1 expression level fold change} &= 2^{-\Delta\Delta Cq(\text{GOI1})} \\ &= 2^{11.09} \\ &= 2180\end{aligned}$$

$$\begin{aligned}\text{Normalized GOI2 expression level fold change} &= 2^{-\Delta\Delta Cq(\text{GOI2})} \\ &= 2^{3.85} \\ &= 14.4\end{aligned}$$

Conclusion: Upon treatment, expression level of GOI1 increased 2,180 fold, and expression level of GOI2 increased 14.4 fold.



**GeneQuery™ Human Hemostasis qPCR Array
(GQH-HEM)
Catalog #GK056**

GeneQuery™ Human Hemostasis qPCR Array Plate Layout* (*8 controls* in Bold and Italic)

	1	2	3	4	5	6	7	8	9	10	11	12
A	A2M	APP	F3	FYN	IL3	JAK3	PFN1	PLAUR	PSAP	SOS1	TMSB4X	<i>β-actin</i>
B	ACTN1	C5AR1	F5	GNAQ	IL5	LAT	PIK3CB	PLCG2	PTK2	SPARC	TUBA4A	<i>GAPDH</i>
C	ACTN2	C6	F7	IGF1	IL6	LYN	PIK3CD	PLEK	SELP	SRGN	VAV1	<i>LDHA</i>
D	ADRA2A	C7	F8	IGF2	ITGA2B	MPL	PIK3R1	PLG	SEPP1	TGFB1	VAV2	<i>NONO</i>
E	AKT2	CLU	FCER1G	IL10	ITGB3	MTCH1	PIKFYVE	PRF1	SERPINA1	THBD	VAV3	<i>PPIH</i>
F	AKT3	COL4A1	FIGF	IL2	ITPR1	P2RY12	PLA2G4A	PRKCA	SERPINE1	THBS1	VCL	<i>GDC</i>
G	APBB1IP	F2	FLNA	IL2RA	ITPR2	PECAM1	PLAT	PRKCE	SFTPA1	TIMP1	VEGFA	<i>PPC</i>
H	APOA1	F2R	FN1	IL2RB	JAK2	PF4	PLAU	PRKCQ	SOD1	TLN1	VWF	<i>NTC</i>

* gene selection may be updated based on new research and development

Appendix. Plate type choice chart.

Plate type A

Brand	Model	kit catalog #
ABI / Life Tech	ABI 5700	GK056-A
	ABI 7000	GK056-A
	ABI 7300	GK056-A
	ABI 7500	GK056-A
	ABI 7700	GK056-A
	ABI 7900 HT	GK056-A
	QuantStudio	GK056-A
	ViiA 7	GK056-A
Bio-Rad	Chromo4	GK056-A
	iCycler	GK056-A
	iQ5	GK056-A
	MyiQ	GK056-A
	MyiQ2	GK056-A
Eppendorf / Life Tech	Matercyler ep realplex 2	GK056-A
	Matercyler ep realplex 4	GK056-A
Stratagene	MX3000P	GK056-A
	MX3005P	GK056-A

Plate type B

Brand	Model	kit catalog #
ABI / Life Tech	ABI 7500 Fast	GK056-B
	ABI 7900 HT Fast	GK056-B
	QuantStudio Fast	GK056-B
	StepOnePlus	GK056-B
	ViiA 7 Fast	GK056-B
Bio-Rad	CFX Connect	GK056-B
	CFX96	GK056-B
	DNA Engine Opticon 2	GK056-B
Stratagene	MX4000	GK056-B

Plate type C

Brand	Model	kit catalog #
Roche	Lightcycler 96	GK056-C
	Lightcycler 480 (96-well)	GK056-C