



Human Pulmonary Alveolar Epithelial Cell cDNA
[HPAEpiC cDNA]
Catalog number: 3204

Product Information

Quantity: Approximately 20 reactions
Volume: 20 μ l
Storage condition: Store at -20°C

Product Description

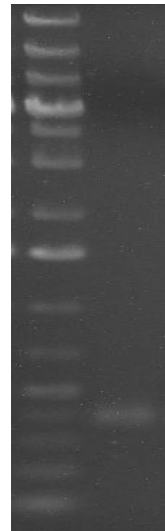
ScienCell Research Laboratories' PCR-ready first strand cDNA is prepared from RNA extracted from normal human primary cells by Qiagen RNeasy kits. 20 μ g of total RNA is reverse-transcribed in 200 μ l final volume using Applied Biosystems' High-Capacity cDNA Reverse Transcription kits. 1 μ l cDNA is sufficient for one PCR reaction.

Quality Control

- The A_{260}/A_{280} ratio of the cDNA is measured to be ~1.8 using Beckman Coulter DU 800 spectrophotometer.
- The cDNA is performance-tested in a control polymerase chain reaction (PCR) using primers of beta-actin. Gel electrophoresis analysis of the PCR products is performed in 1% (w/v) agarose gel with GeneRuler™ 1kb Plus DNA Ladder, one major band of around 400 bp can be observed.

Application

- Immediate PCR amplification of known genes
- Comparison of gene expression patterns between biological samples
- Gene mutation analysis
- Analysis of mRNA alternative splicing
- Gene cloning and target sequencing



QC electrophoresis gel