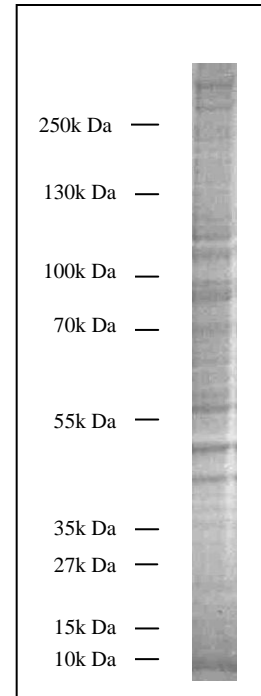




**Human Keratocytes (HK) Lysate**  
Catalog Number: 6526

**Product Information**

|                  |   |
|------------------|---|
| Quantity:        | 400 µg  |
| Concentration:   | 4 mg/ml   |
| Storage buffer:  | 1X reducing sample buffer (50 mM Tris-HCl pH 6.8, 5% glycerol, 1% SDS, 0.002% bromphenol blue, 5% beta-mercaptoethanol)   |
| Lysis buffer:    | Modified RIPA buffer (50 mM Tris-HCl pH 7.2, 150 mM NaCl, 1% NP-40, 1mM EDTA, 1 mM EGTA, 0.4 mM PMSF, 5 µg/ml aprotinin, 5 µg/ml leupeptin, 1 µg/ml pepstatin, 1 mM Na <sub>3</sub> VO <sub>4</sub> , 5 mM NaF) |
| Quality control: | Lysate quality was assured with a NuPAGE 4-12% Bis-Tris Gel stained with Coomassie brilliant blue.  |



QC SDS-PAGE gel

**Storage/Handling**

Stable for 6 months at -20°C from date of shipment. For maximum recovery of product, centrifuge the original vial after thawing and before removing the cap. Aliquot to avoid repeated freezing and thawing.

**Application**

Cell lysate need to to be boiled for 5 minutes before loading on SDS-PAGE for western blot. 40 µg per lane is recommended for mini gel.