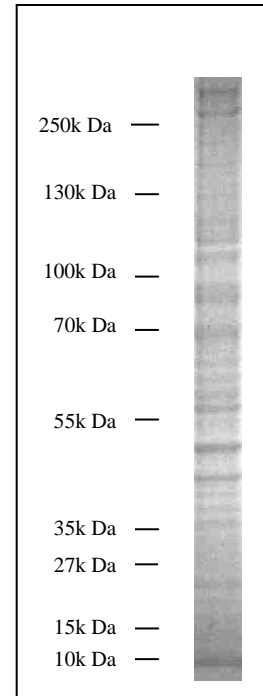




Human Hepatic Stellate Cells (HHSteC) Lysate
Catalog Number: 5306

Product Information

Quantity:	400 µg
Concentration:	4 mg/ml
Storage buffer:	1X reducing sample buffer (50 mM Tris-HCl pH 6.8, 5% glycerol, 1% SDS, 0.002% bromphenol blue, 5% beta-mercaptoethanol)
Lysis buffer:	Modified RIPA buffer (50 mM Tris-HCl pH 7.2, 150 mM NaCl, 1% NP-40, 1mM EDTA, 1 mM EGTA, 0.4 mM PMSF, 5 µg/ml aprotinin, 5 µg/ml leupeptin, 1 µg/ml pepstatin, 1 mM Na ₃ VO ₄ , 5 mM NaF)
Quality control:	Lysate quality was assured with a NuPAGE 4-12% Bis-Tris Gel stained with Coomassie brilliant blue.



QC SDS-PAGE gel

Storage/Handling

Stable for 6 months at -20°C from date of shipment. For maximum recovery of product, centrifuge the original vial after thawing and before removing the cap. Aliquot to avoid repeated freezing and thawing.

Application

Cell lysate need to to be boiled for 5 minutes before loading on SDS-PAGE for western blot. 40 µg per lane is recommended for mini gel.